

CARNAHAN PROCTOR CROSS, INC.

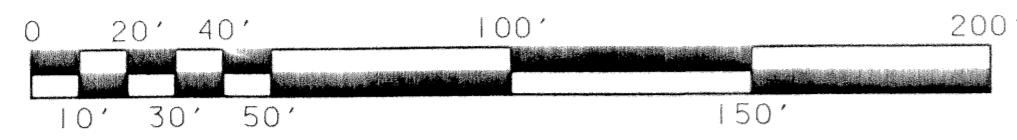
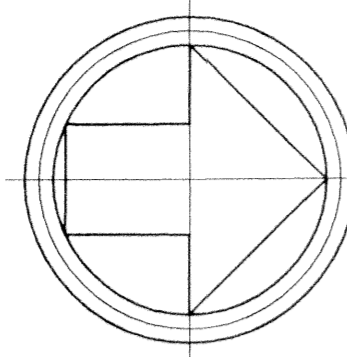
CONSULTING ENGINEERS SURVEYORS PLANNERS

6101 WEST ATLANTIC BOULEVARD, MARGATE, FLORIDA 33063
PHONE: 954-972-3959 FAX: 954-972-4178

APRIL 2002

990901B

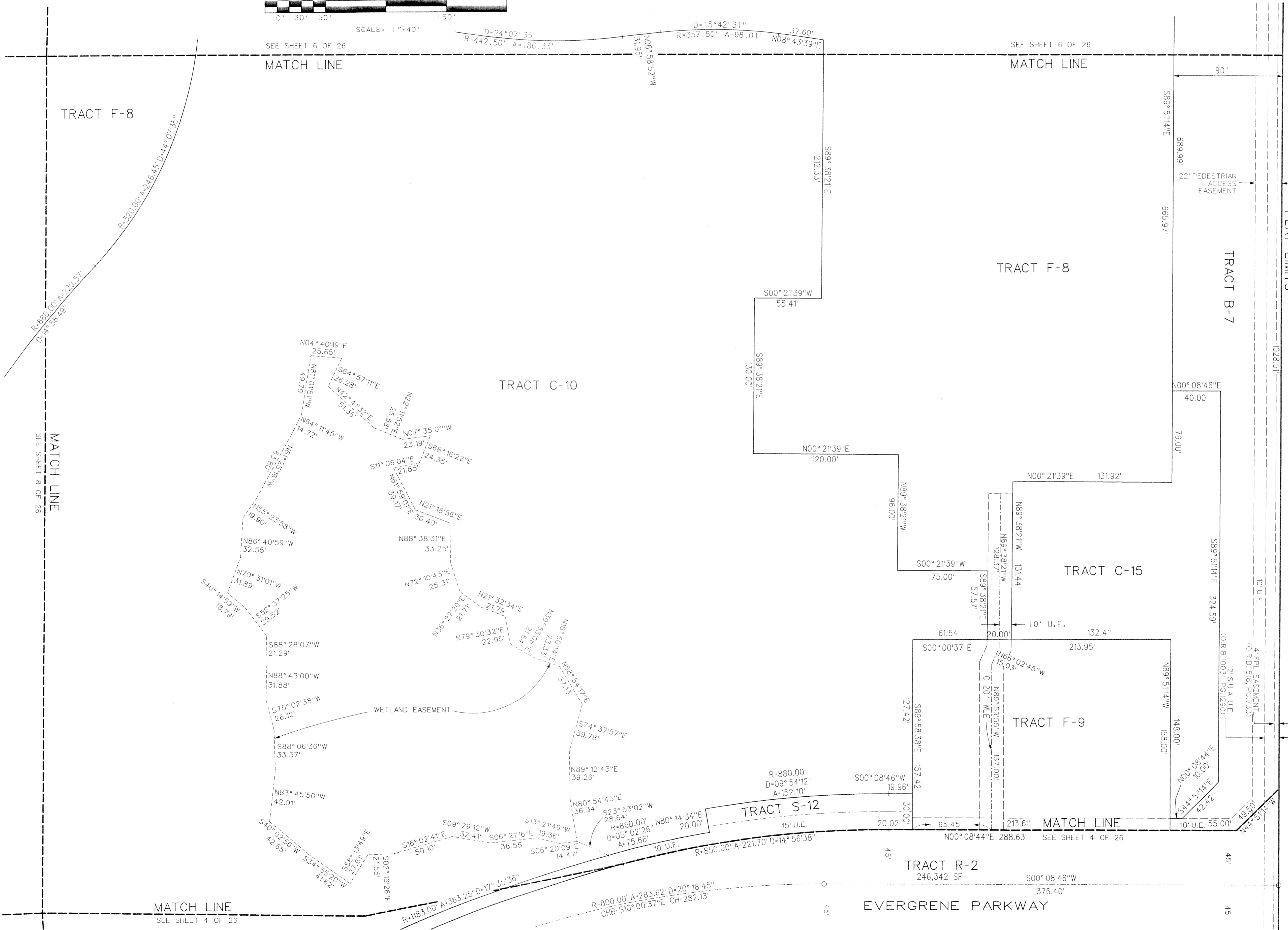
JSH



SCALE: 1"=40'

EVERGRENE PLAT TWO

A REPLAT OF A PORTION OF TRACT "A", "EVERGRENE" (P.B. 93, PGS. 117-119, P.B.C.R.)
CITY OF PALM BEACH GARDENS, PALM BEACH COUNTY, FLORIDA



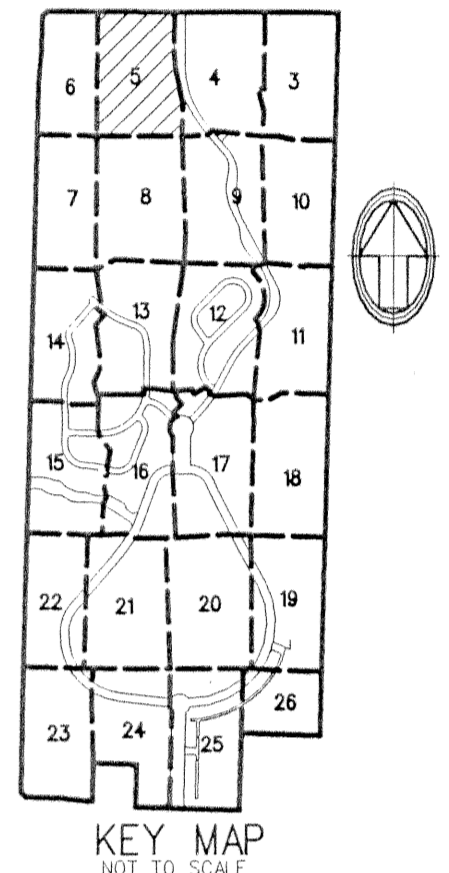
SEE SHEET 6 OF 26
MATCH LINE

SEE SHEET 6 OF 26
MATCH LINE

SEE SHEET 8 OF 26
MATCH LINE

SEE SHEET 4 OF 26
MATCH LINE

SHEET 5 OF 26



DONALD ROSS ROAD
(D.B. 1031, PG. 628)

LEGEND:

- SET PERMANENT REFERENCE MONUMENT (P.R.M.) • LB2936 UNLESS OTHERWISE NOTED
- PERMANENT CONTROL POINT
- CENTERLINE
- A.A.E. ARC LENGTH
- CH ANCHOR EASEMENT
- CHB CHORD
- D CHORD BEARING
- D.B. DELTA (CENTRAL ANGLE)
- D.B. DEED BOOK
- D.E. DRAINAGE EASEMENT
- FPL FLORIDA POWER & LIGHT COMPANY
- IEE INGRESS EGRESS EASEMENT
- LSE LIFT STATION EASEMENT
- NPBCID NORTHERN PALM BEACH COUNTY IMPROVEMENT DISTRICT
- N.R. NON-RADIAL
- O.R.B. OFFICIAL RECORDS BOOK
- P.C.D. PLANNED COMMUNITY DEVELOPMENT
- PG. PAGE
- P.B. PLAT BOOK
- P.B.C.R. PALM BEACH COUNTY RECORDS
- R RADIUS
- R.P.B. ROAD PLAT BOOK
- R/W RIGHT-OF-WAY
- SF SQUARE FEET
- SLE SEWER LINE EASEMENT
- SUA SEACOAST UTILITY AUTHORITY
- U.E. UTILITY EASEMENT
- WMAE WATER MANAGEMENT ACCESS EASEMENT
- WME WATER MANAGEMENT EASEMENT
- WLE WATER LINE EASEMENT

FILE: c:\990901\990901.dwg
DATE: 16-MAY-02 10:12